

BAE 10th Anniversary paper

Rural areas between locality and global networks.  
Local development mechanisms and the role of policies  
empowering rural actors

Francesco Mantino (CREA-Policy and Bio-economy)

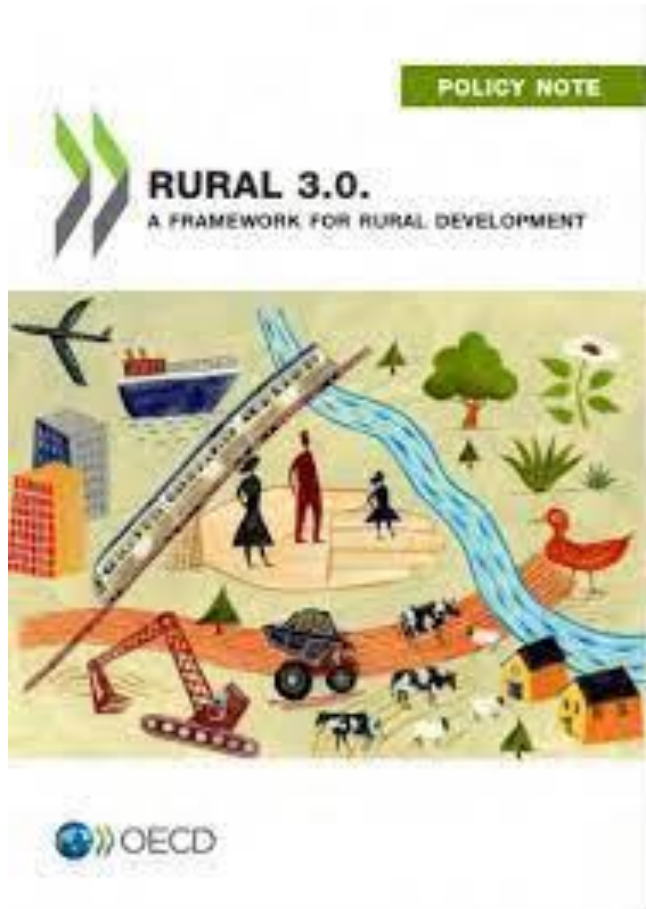
10th Anniversary BAE Webinar series, 6th May 2022

# Objectives and structure of this paper

- ▶ Explore how the diversity of rural areas is represented in literature
- ▶ What are the theoretical approaches explaining this diversity and what development mechanisms are behind that
- ▶ Explore how these achievements have influenced the policy framework
- ▶ Draw the general features of an alternative model for policy design
- ▶ Draw up implications for future research and policy actions

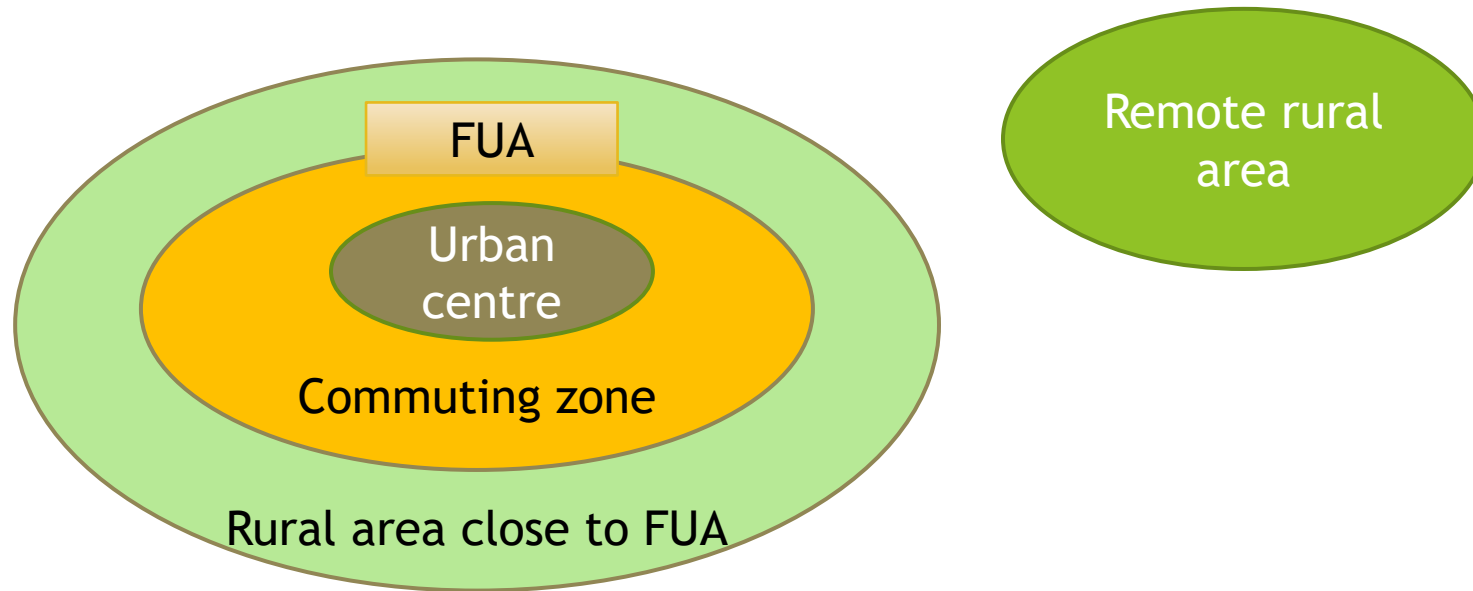
# The representation of the rural diversity and increasing rural-urban disparities

- ▶ move from simple indicators of population density and percentage of rural population to more elaborate criteria
- ▶ each country has developed its own definition of rurality
- ▶ Six types of approaches:
  - administrative
  - morphological (or demographic)
  - locational
  - landscape (land-cover and climatic conditions)
  - functional
  - mixed approach (at least two combined approaches)

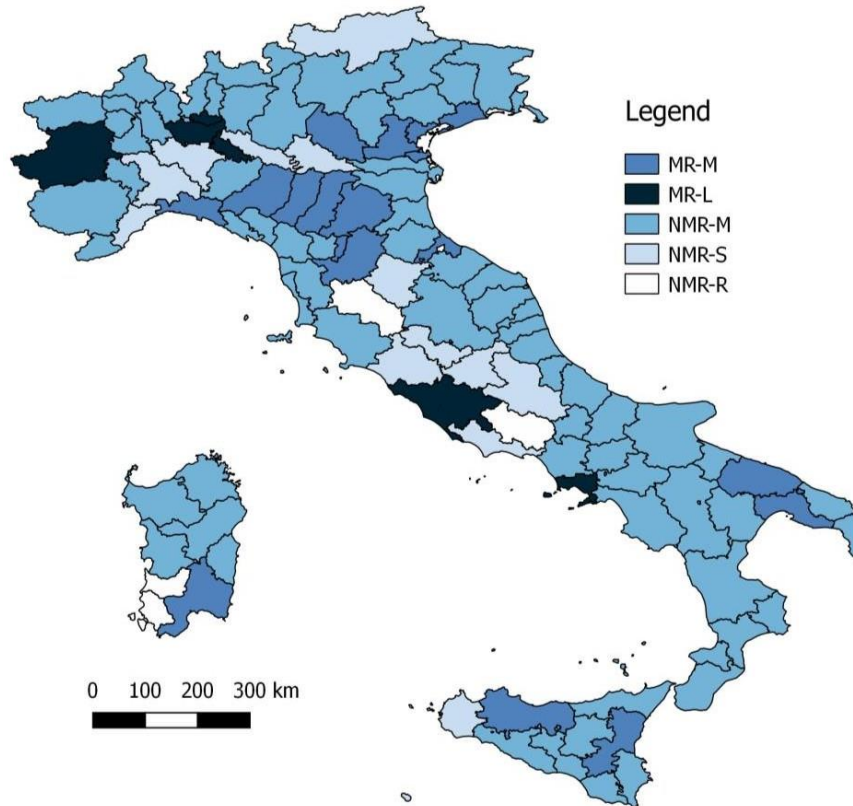


# OECD Framework for rural areas definition

# How “rural” is operationalised into the OECD Functional Urban Area



# OECD territorial classification - Italy



Type	Population	Pop (%)	Regions	Regions (%)
MR	26,699,964	44.07%	22	20.00%
NMR	33,889,482	55.93%	88	80.00%
MR break-down				
MR-M	12,644,957	20.87%	6	5.45%
MR-L	14,055,007	23.20%	16	14.55%
Total	26,699,964	44.07%	22	20.00%
NMR break-down				
NMR-M	27,993,259	46.20%	71	64.55%
NMR-S	4,909,868	8.10%	13	11.82%
NMR-R	986,355	1.63%	4	3.64%
Total	33,889,482	55.93%	88	80.00%

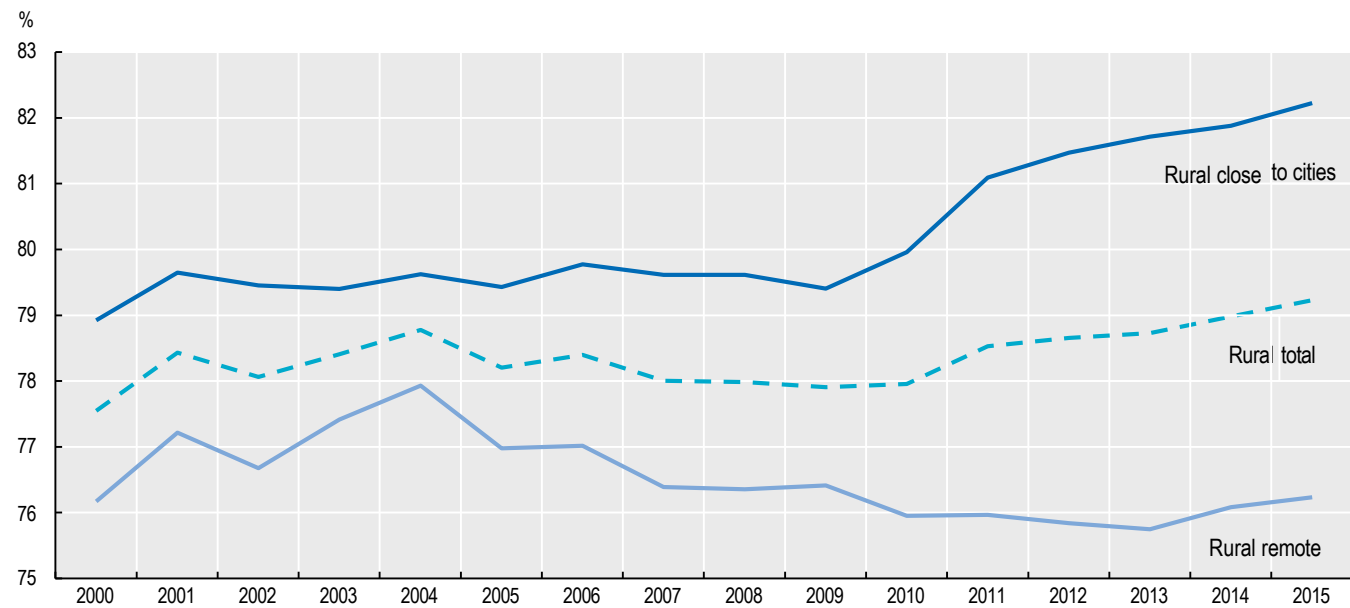
## Metropolitan regions (MR)

- large metro (MR-L)
- metro (MR-M)

## Non-metropolitan regions (NMR)

- with access to metro (NMR-M)
- with access to a small/medium city (NMR-S)
- remote (NMR-R)

*“proximity allows stronger linkages between urban and rural places”*



# A series of relevant European projects

## Rural areas and socio-economic transition

- SHERPA (H2020)
- RELOCAL (H2020)
- RURALISATION (H2020)

## Rural-urban relations

- ROBUST (H2020)

## Peripheralisation and marginal rural areas

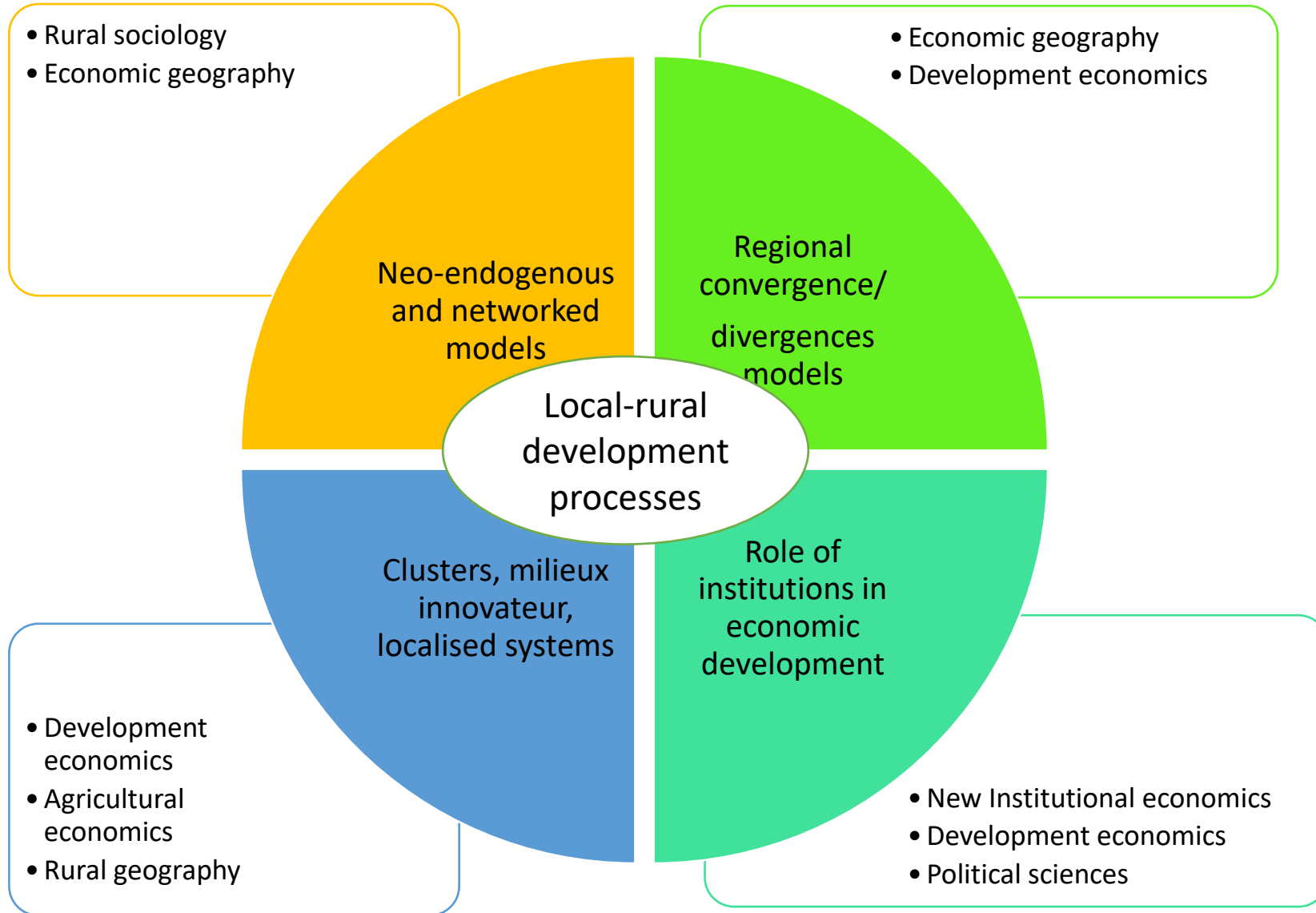
- PROFECY (ESPON)
- ESCAPE (ESPON)
- SIMRA (H2020)

## Rural ecological/sustainable systems

- PEGASUS (H2020)
- PROVIDE (H2020)
- UNISECO (H2020)
- MOVING (H2020)



## Research achievements as results of different disciplines



## Some relevant research achievements which make more complex the analysis of development disparities

- ▶ polarisation across regions and NUTS3 units even higher
- ▶ Neo-endogenous theories: more autonomous functions of rural areas, deriving from the territorial/social capital
- ▶ Peripherality also involves intermediate, urban and metropolitan areas
- ▶ networks enabling connectivity between rural areas, adjacent urban areas and mainly beyond the geographical proximity

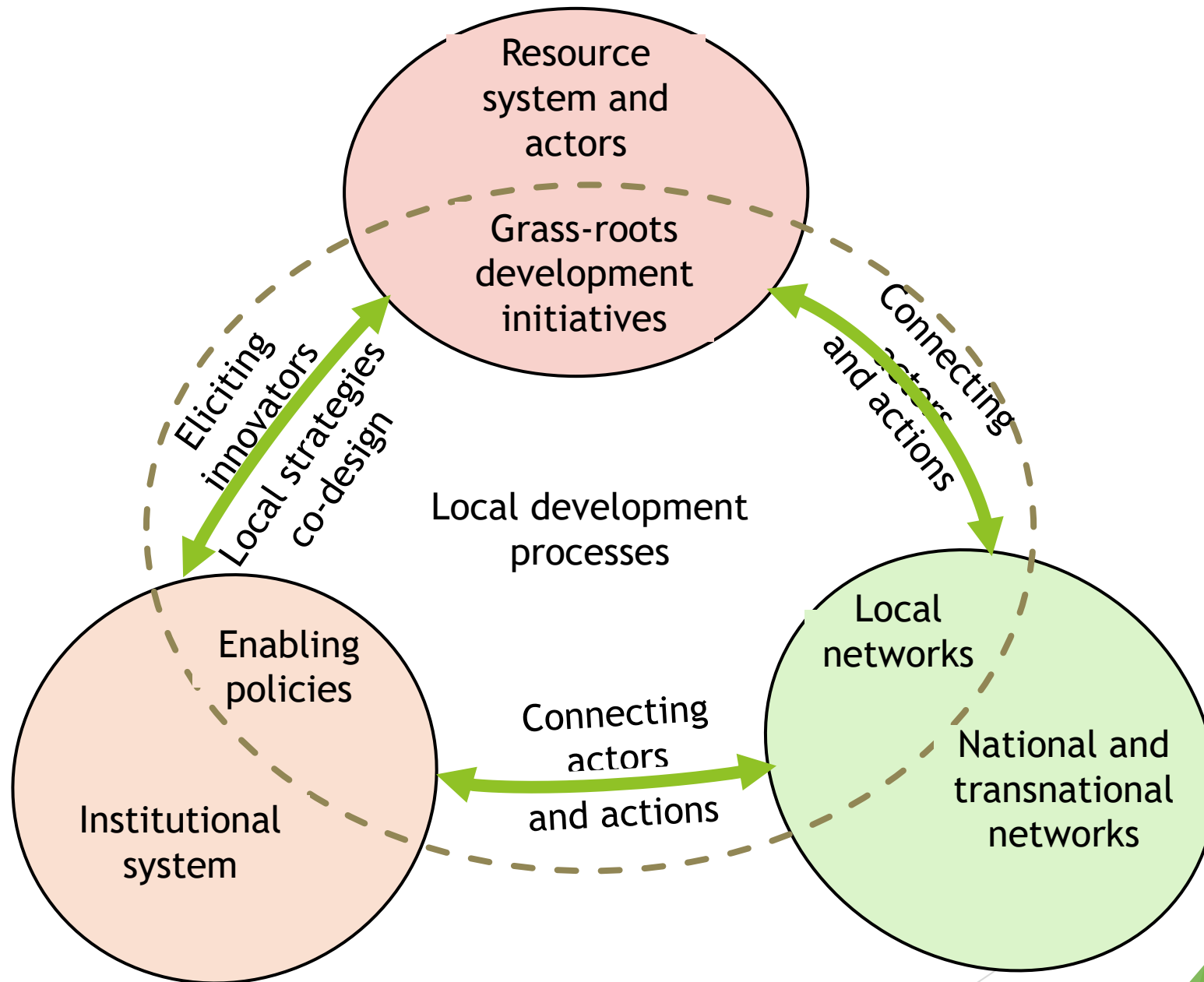
## Different kind of networks go beyond the close geographical proximity

- ▶ **Knowledge and technological networks:** linkages with actors involved in the scientific and technical support, knowledge and information, organisation and marketing, and finally implementation of regulatory standards
- ▶ **Business networks** in rural areas to transmit information and promote innovation.
- ▶ broader connectivity and “virtual proximity” across the space are also relevant for remote rural areas.
- ▶ **Food-networks** that go beyond the territory where productions are based
- ▶ **Political and social networks:** the three most common reasons for using rural development networks were to obtain advice and information, identify sources of funding, and share local learning and experience (Miller-Wallace, UK, 2012)

# Why the gap between official rural areas definitions and research achievements ?

- ▶ Insufficient pressures from policy makers for more detailed official definition of rural areas
- ▶ Official definitions based on too aggregated data
- ▶ a lack of data on several aspects at the right geographic scale, in particular on climate and environment performance and on social challenges, quality of life and well-being.
- ▶ Lack of efforts in connecting and interchange between different available sources
- ▶ Difficulty to achieve reliable and generalised information on networks

# From agglomeration forces to a more complex frame of drivers



# Key issues for research and policy

- ▶ move from a functional model to another approach based on the territorial capital endowments of rural areas, including access to essential services and networks
- ▶ developing a rural area concept based on the variety of functions that rural areas play
- ▶ fill persistent data gaps at the correct geographical scale (local in many cases), RUSTIK and GRANULAR (HEurope)
- ▶ focus on how different rural areas can face the different transitions (Long Term Vision for Rural Areas)
- ▶ Policy impact applied to a mix of different policies, including all CAP instruments (Rural Proofing)

# Thanks so much!

- ▶ The article is free access on Bio-based and Applied Economics as BAE 10th Anniversary papers:  
<https://oaj.fupress.net/index.php/bae/index>
- ▶ F. Mantino (2021). Rural areas between locality and global networks. Local development mechanisms and the role of policies empowering rural actors. Bio-based and Applied Economics 10(4): 265-281. doi: 10.36253/bae-12364
- ▶ If you can, please send any comment to:  
[Francesco.mantino@crea.gov.it](mailto:Francesco.mantino@crea.gov.it)