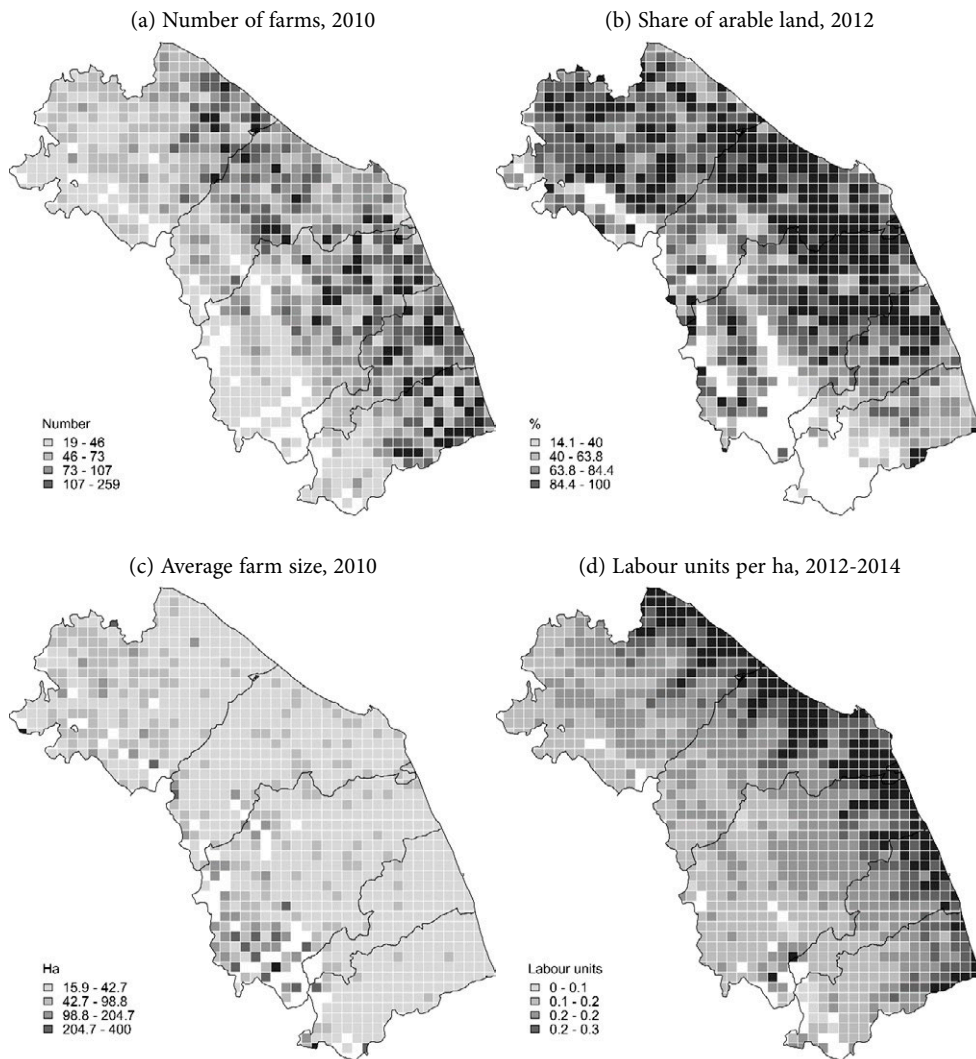
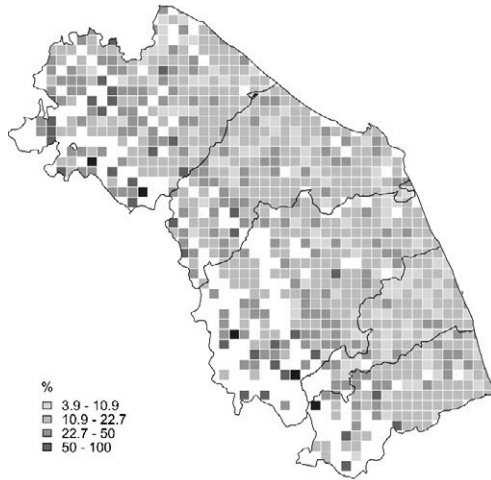


Appendix

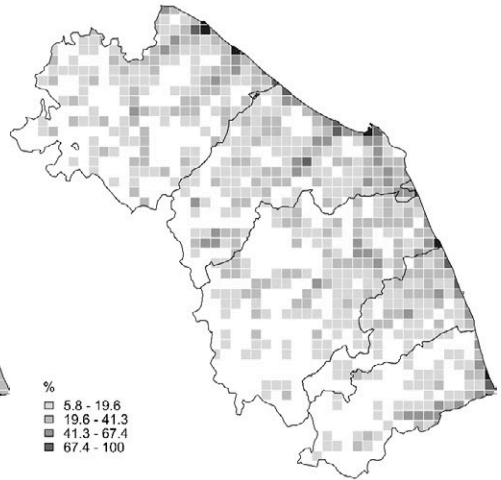
Figure A1. Spatial distribution of the predictors used in the regression models within a 3-km-size grid, Marche (Italy).



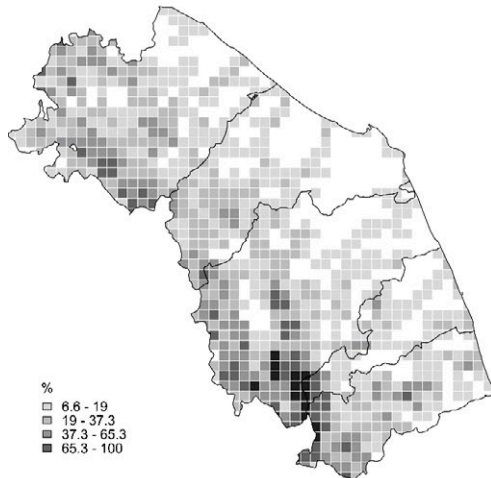
(e) Share of young farmers, 2010



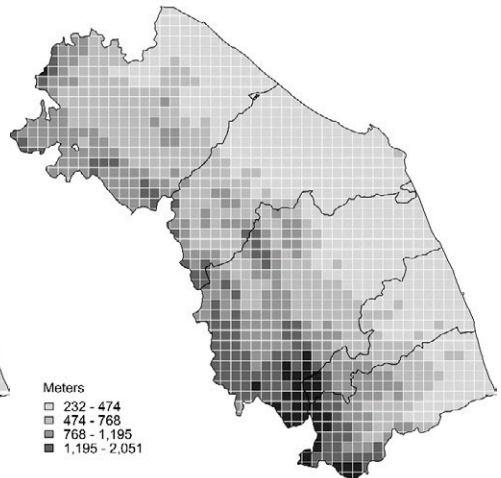
(f) Share of urban areas, 2012



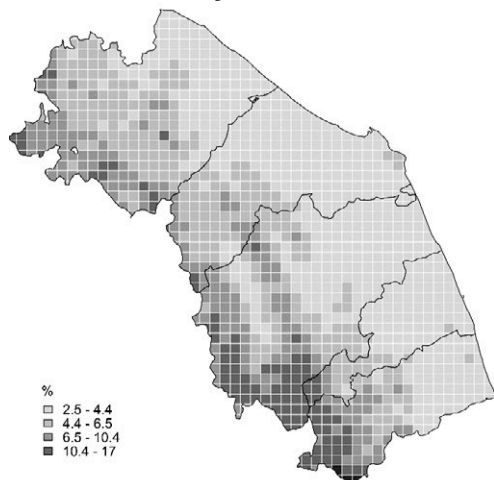
(g) Share of natural areas, 2012



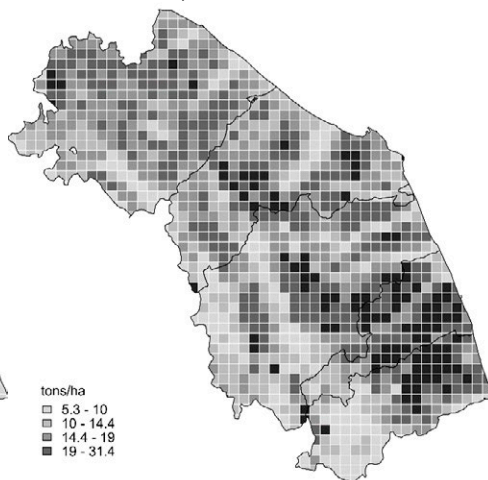
(h) Altimetry, 2014



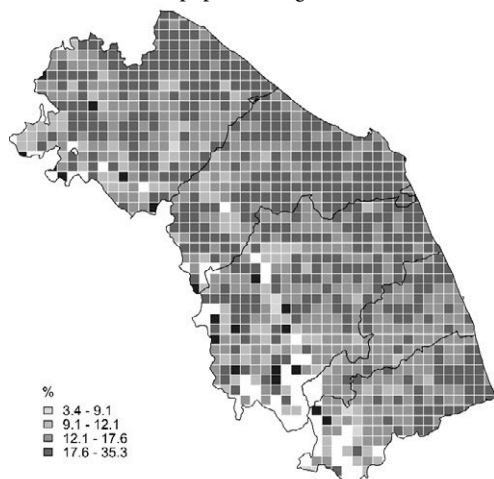
(i) Soil organic matter, 2012



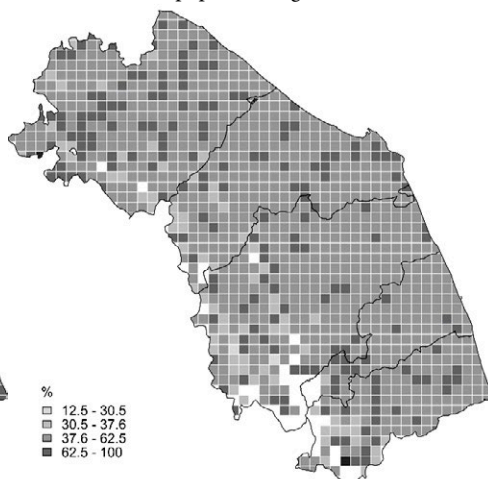
(j) Erosion, 2010



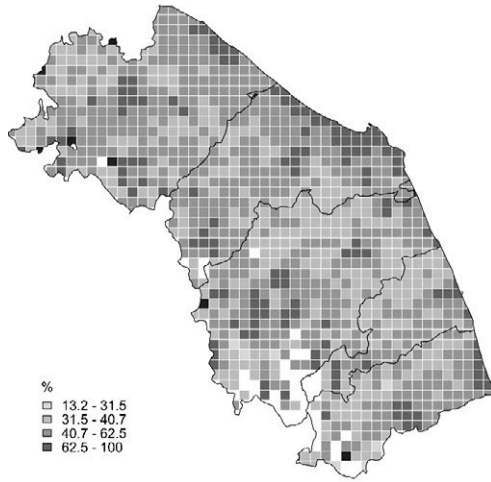
(k) Share of population aged 20-39, 2011



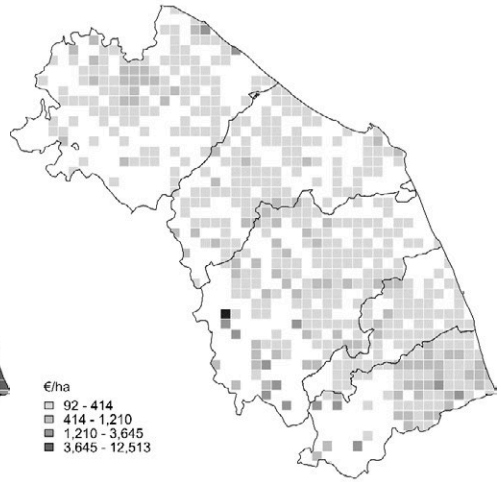
(l) Share of population aged 40-64, 2011



(m) Share of higher education population, 2011



(n) Policy support, 2008-2014



Source: Authors' elaborations.